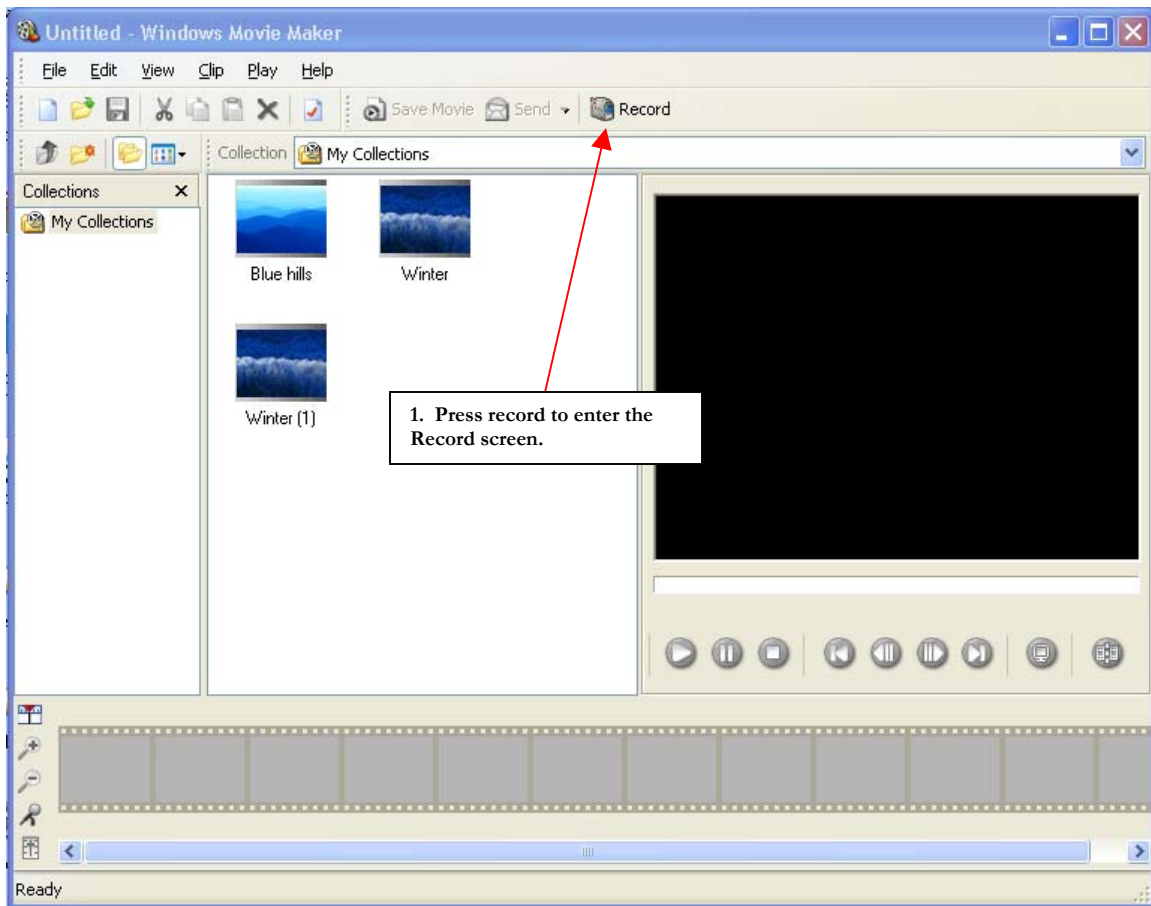
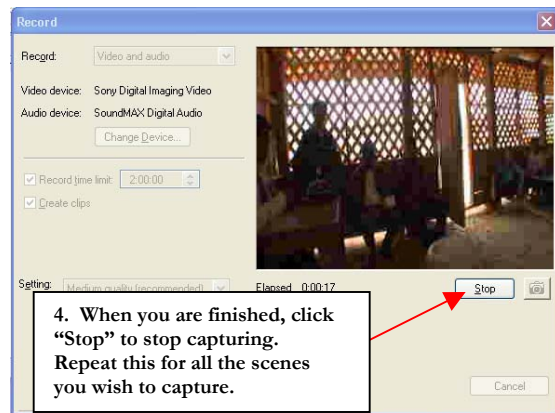
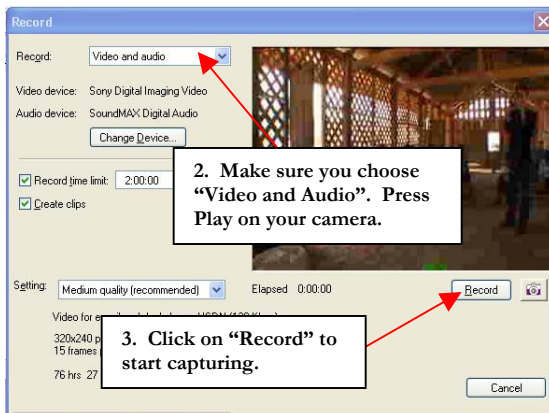


CAPTURING FOOTAGE VIA USB WITH WINDOWS MOVIE MAKER.

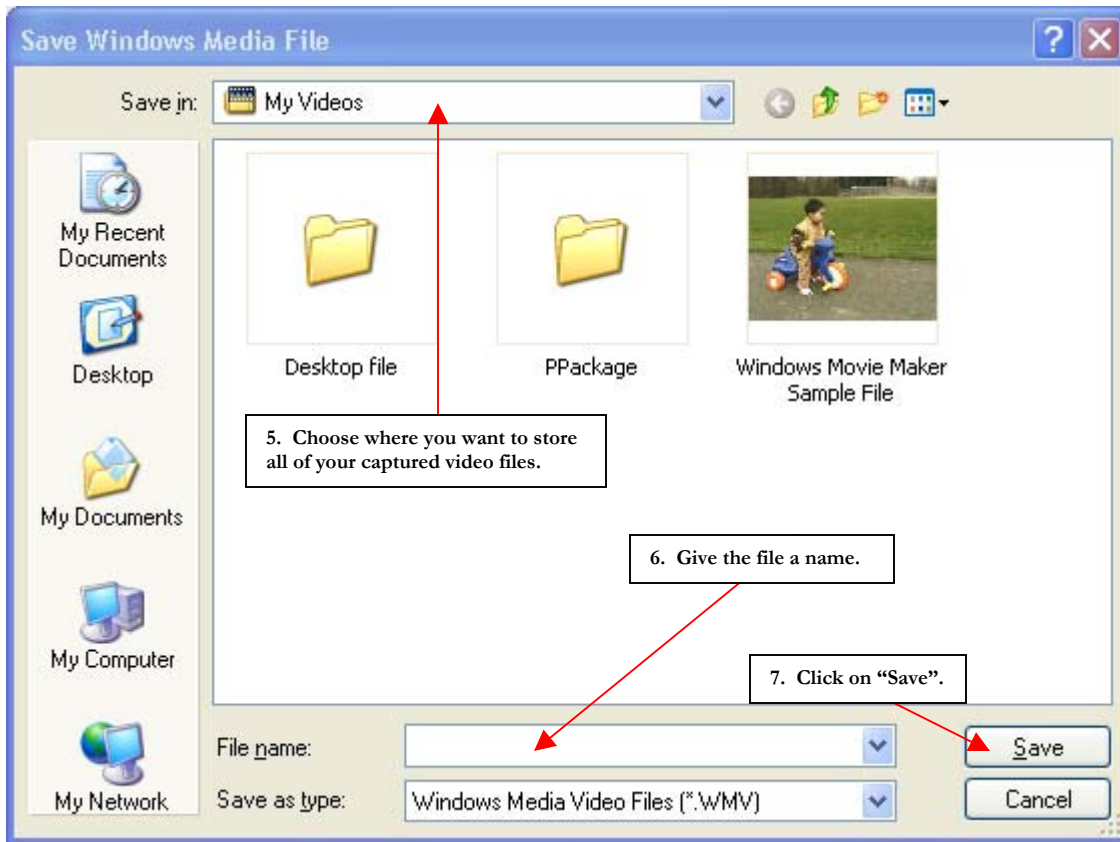
1. Opening Windows Movie Maker



2. Capturing Your Footage.



3. Saving Your File.

**NOTE:**

All captured files will be stored in **My Documents** -> **My Videos** by default. When you import these files into Adobe Premiere, you must get them from this folder. You can change the default as shown in 3.5.